

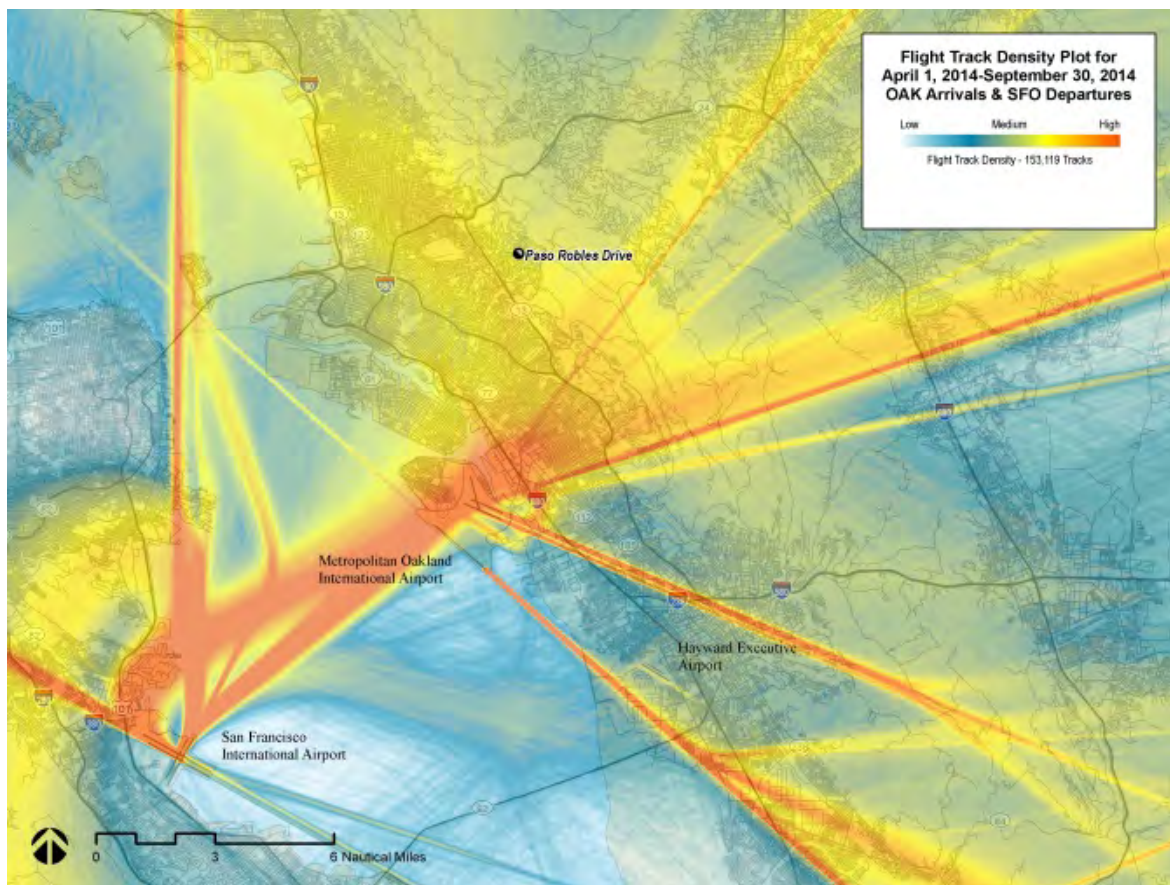
Flight Procedures and Noise: What's the latest?

ACI-NA Airports@Work Conference

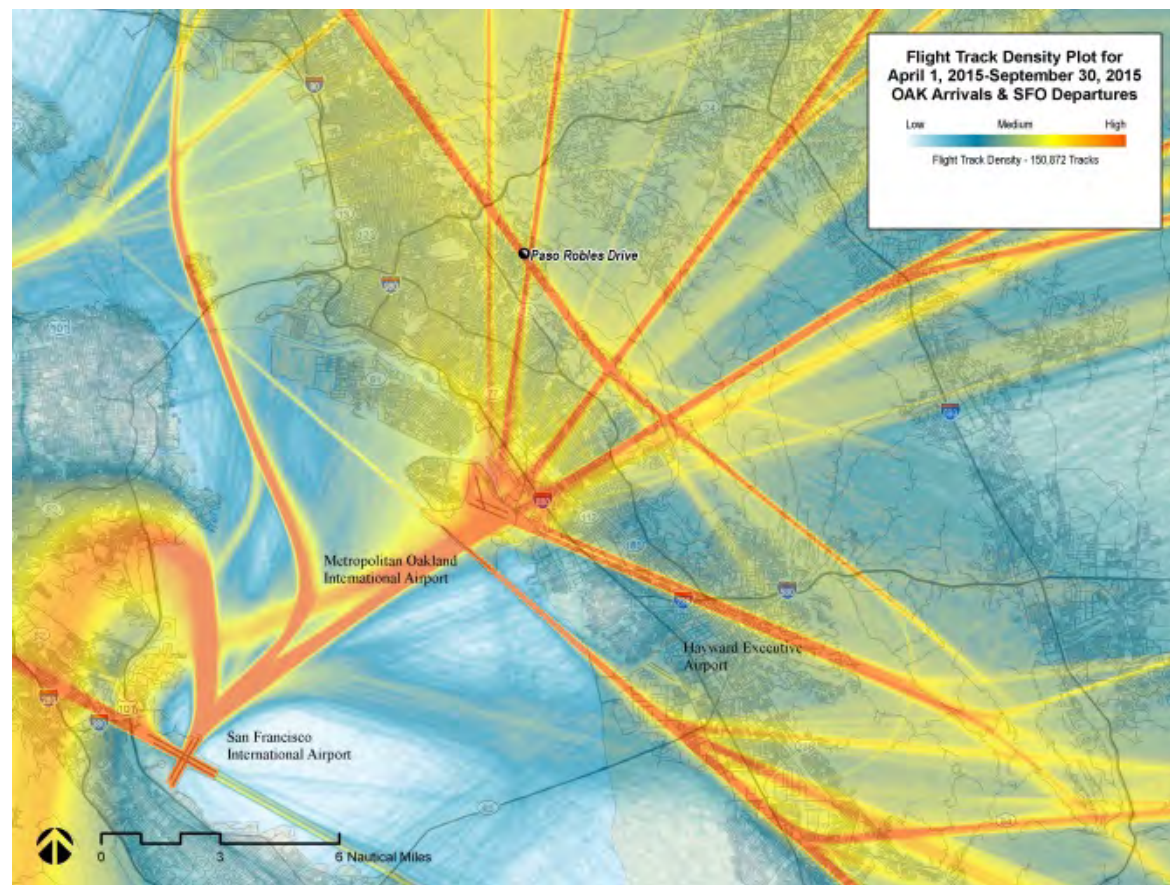
Mary Ellen Eagan

April 20, 2016

Aircraft Flight Track Data



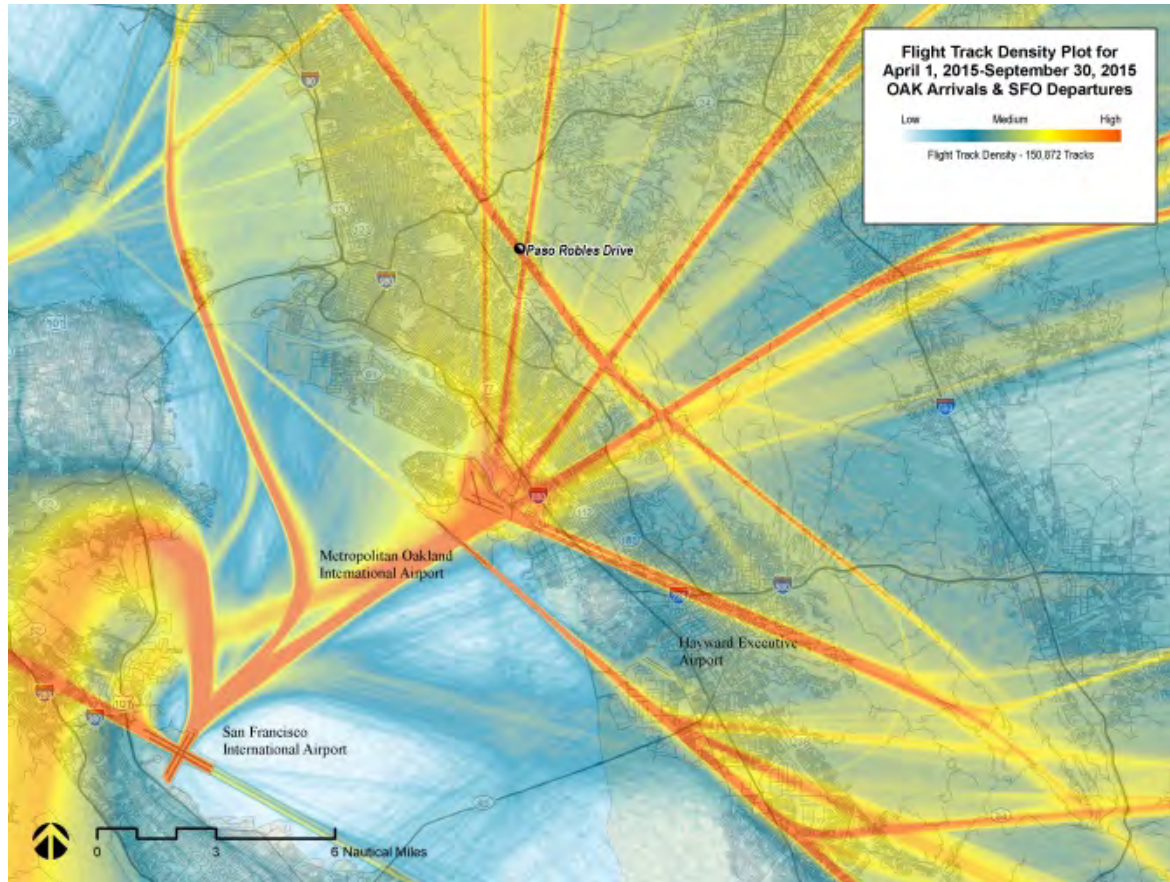
April 1 – September 30, 2014



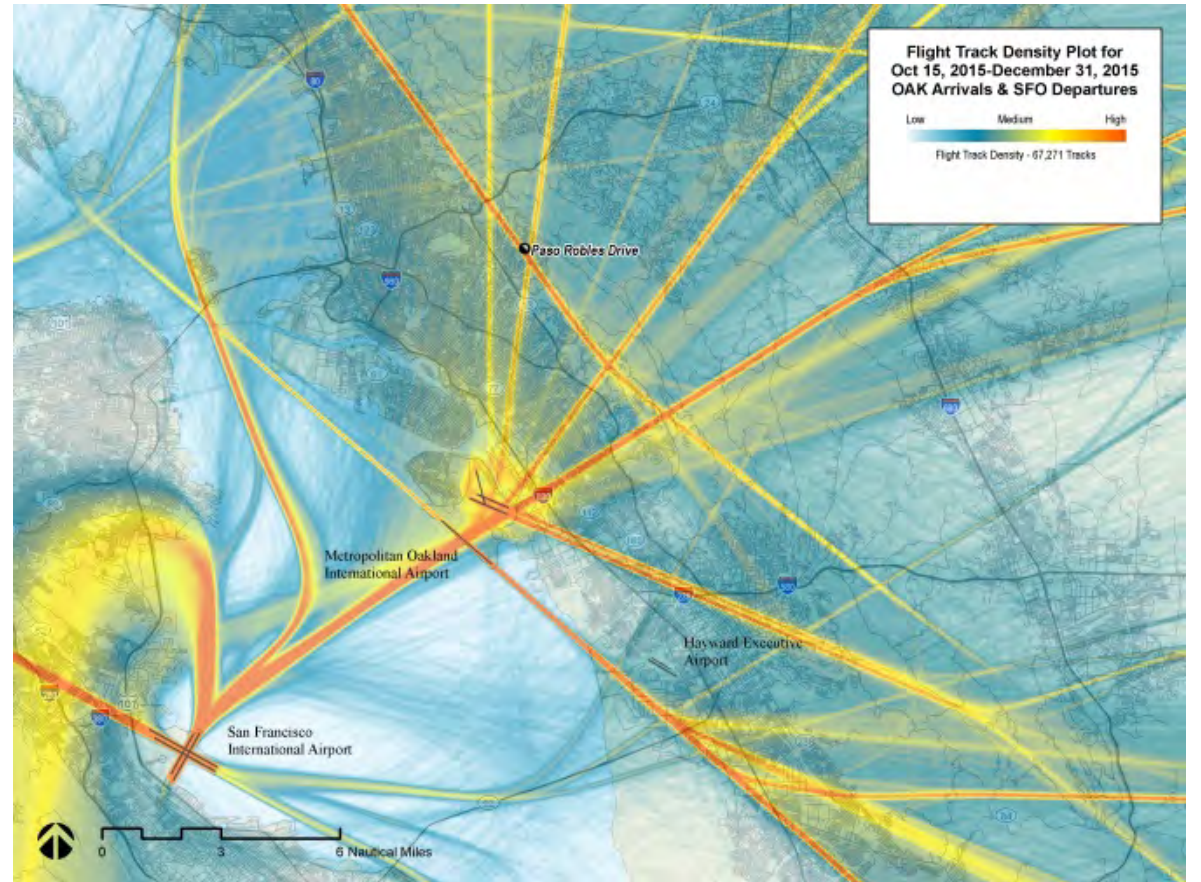
April 1 – September 30, 2015



Aircraft Flight Track Data

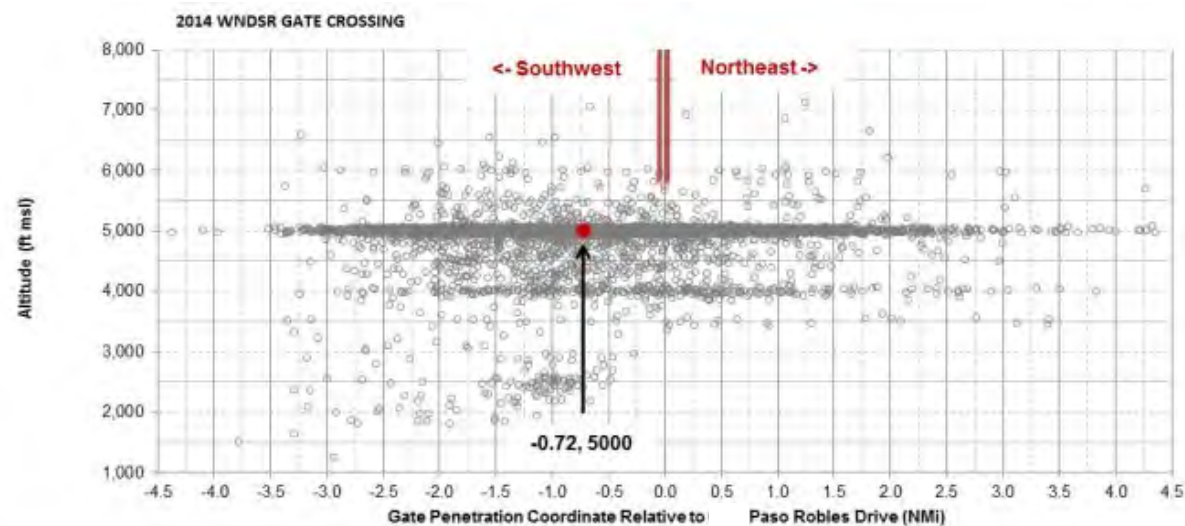
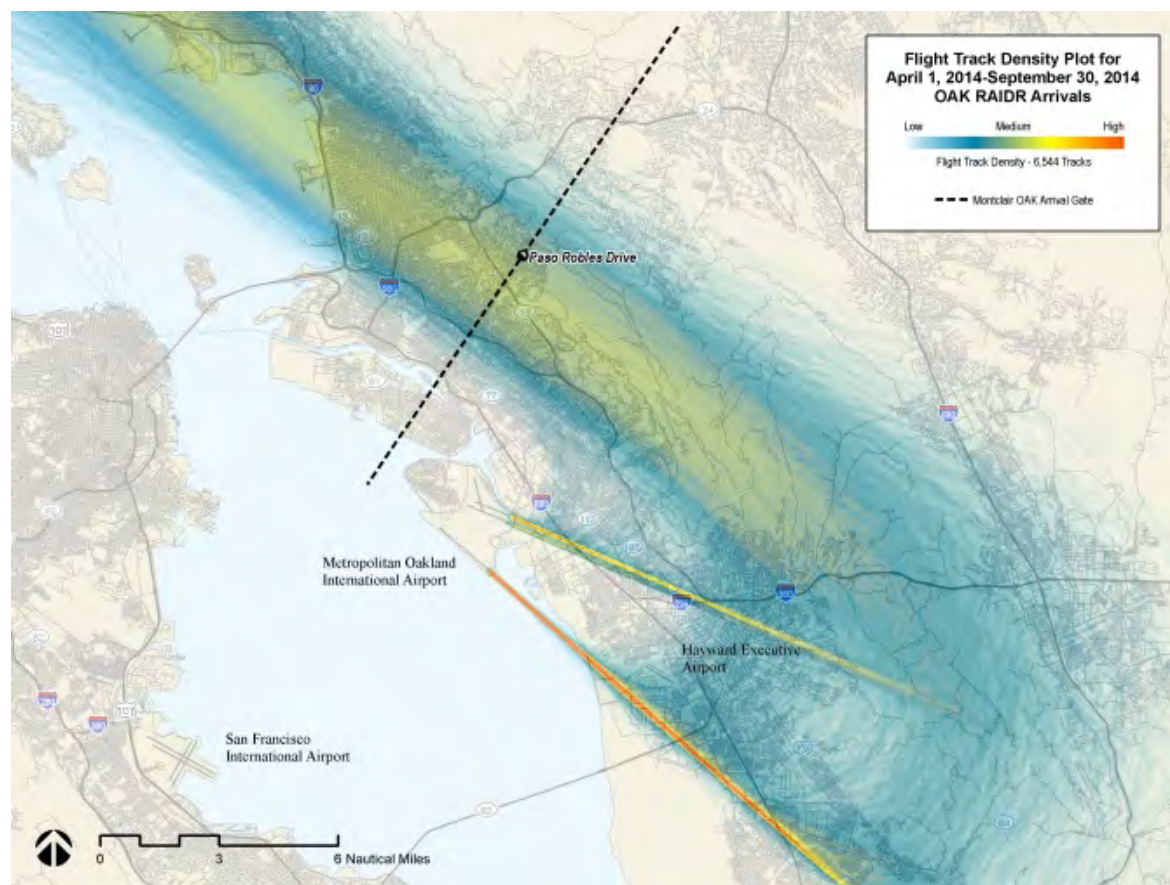


April 1 – September 30, 2015



October 15 – December 30, 2015 

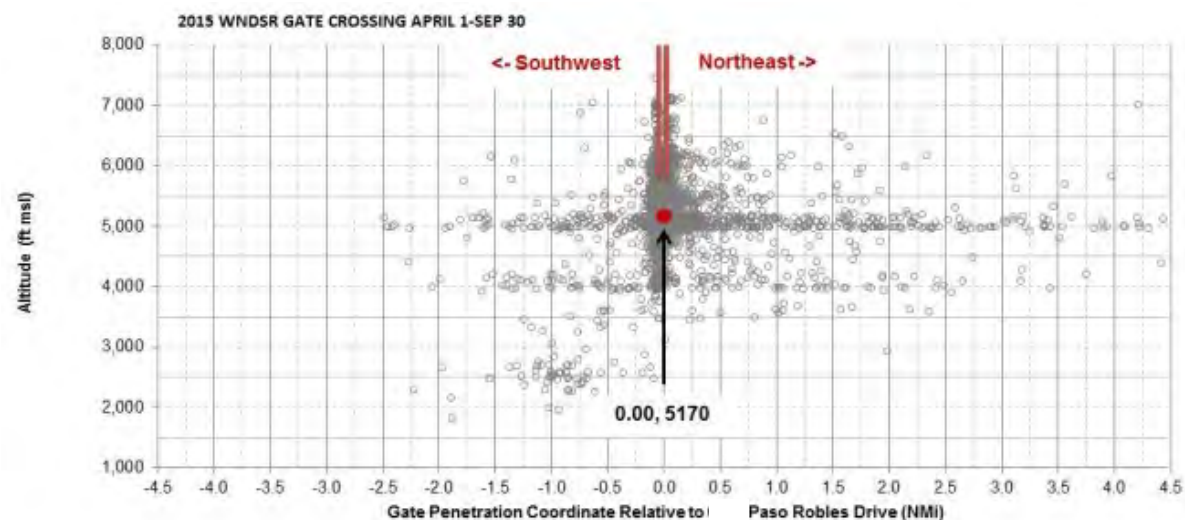
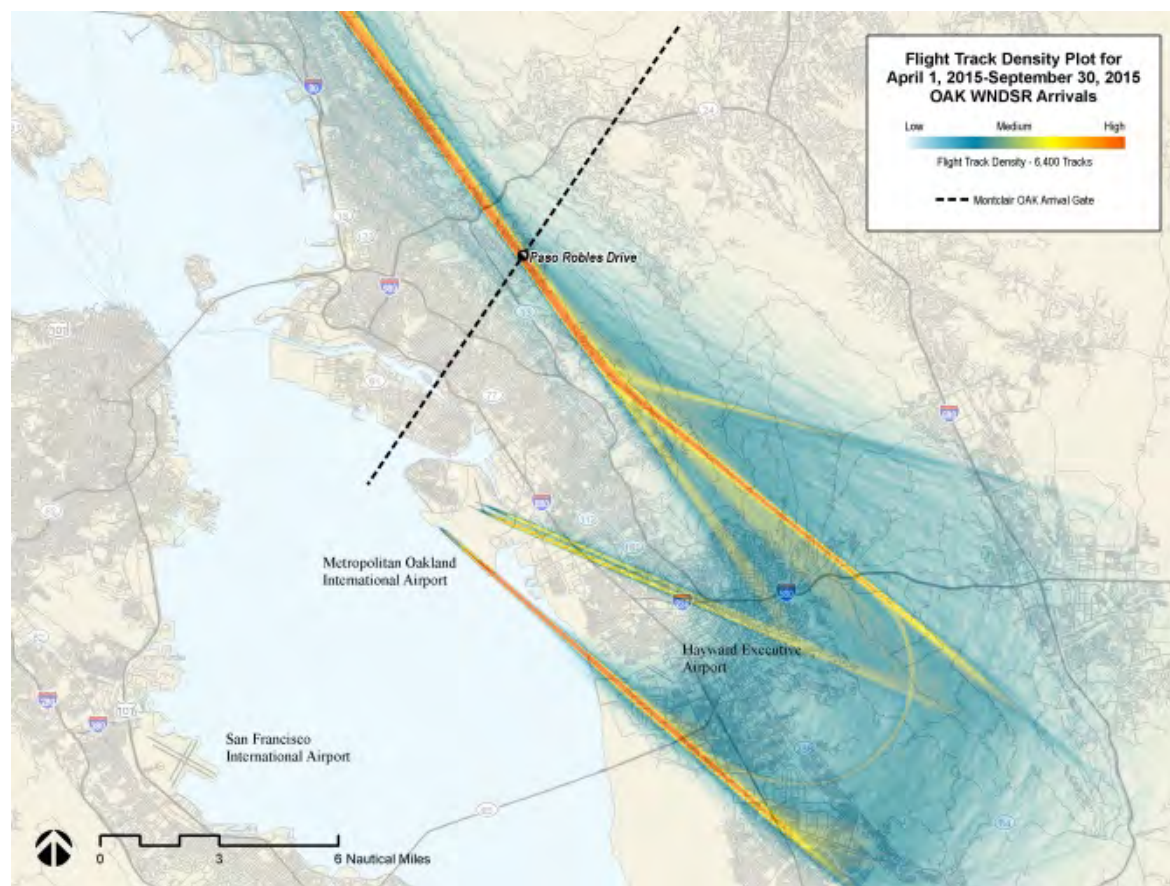
Flight Track Evaluations – RAIDR



OAK Arrivals through “Montclair” Gate: April 1 – September 30, 2014



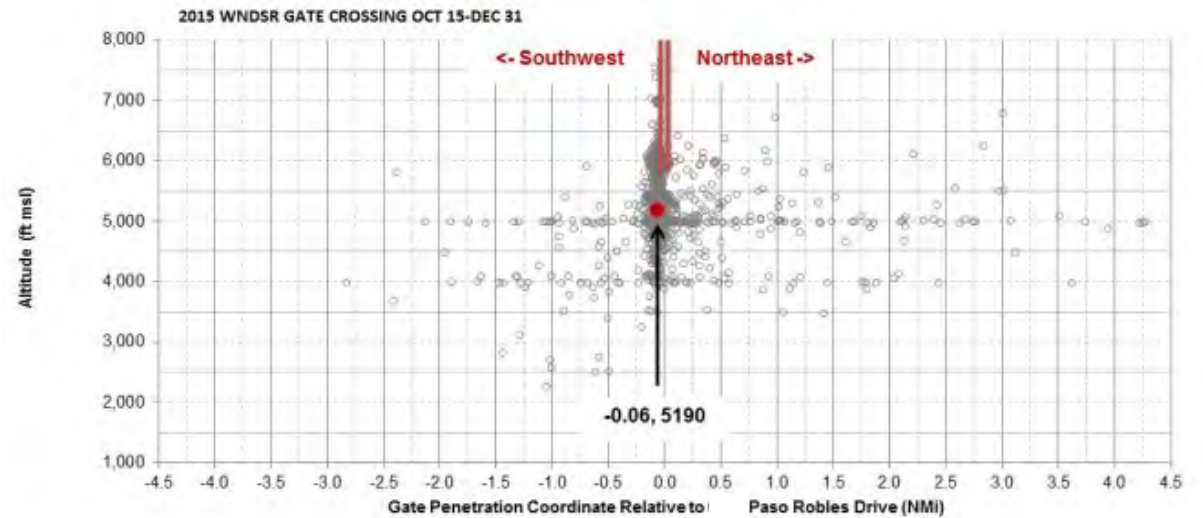
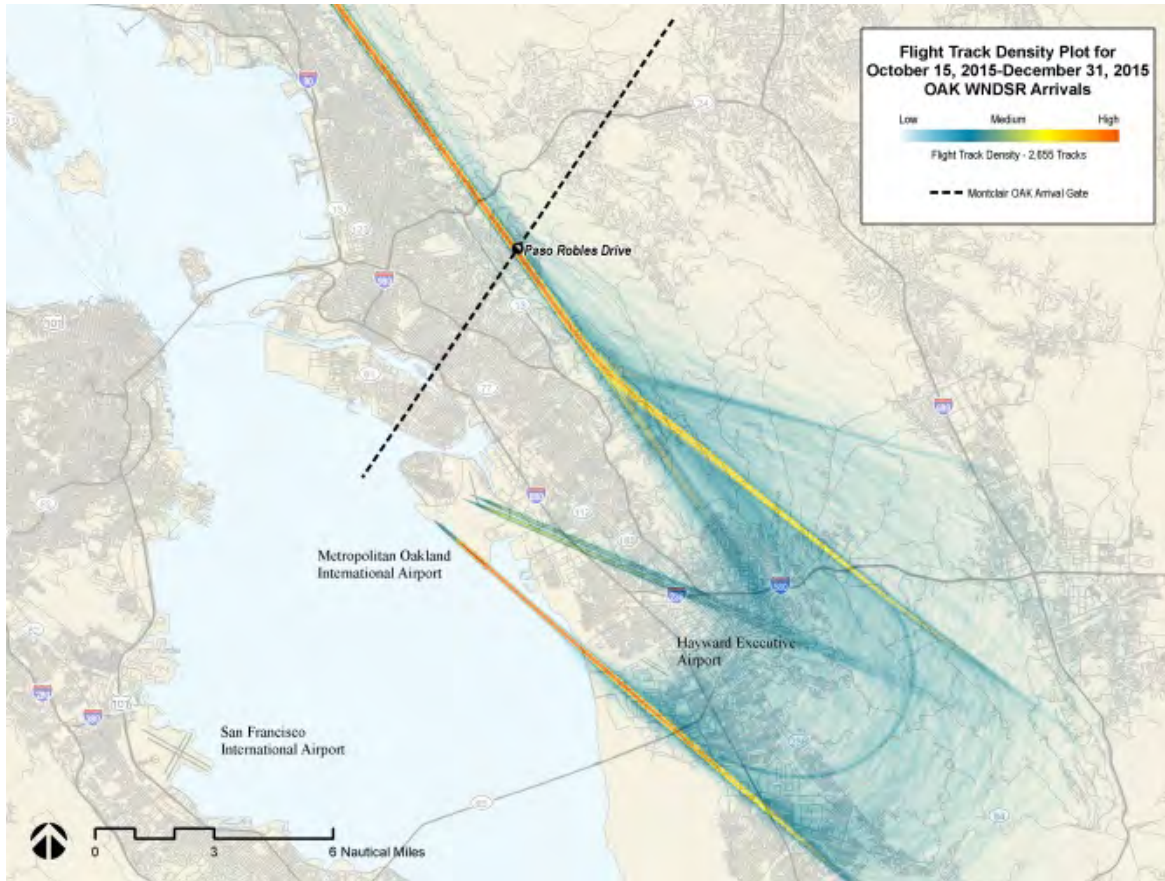
Flight Track Evaluations – WNDSR1



OAK Arrivals through “Montclair” Gate: April 1 – September 30, 2015



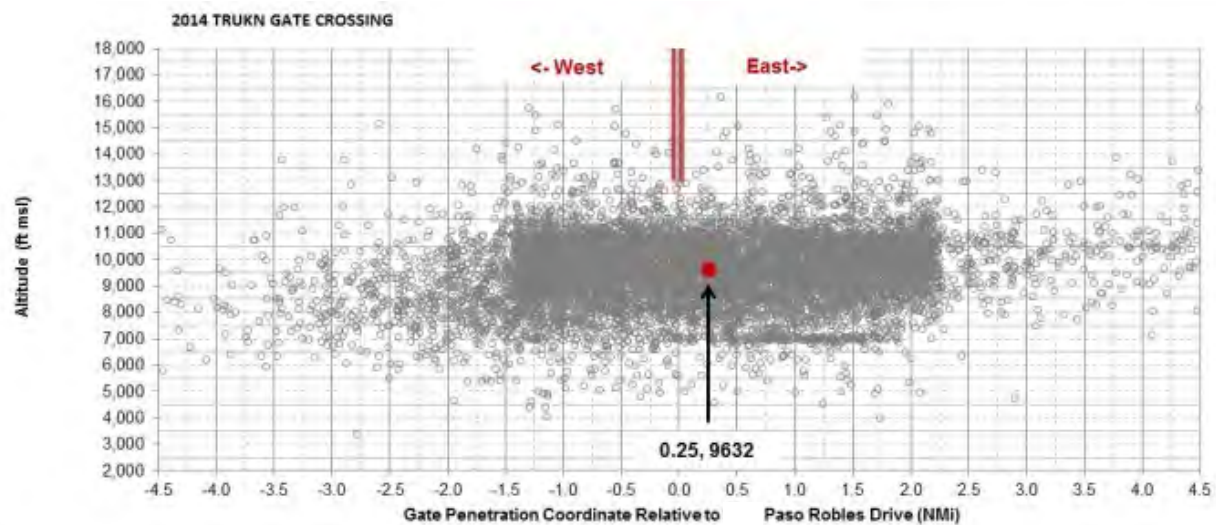
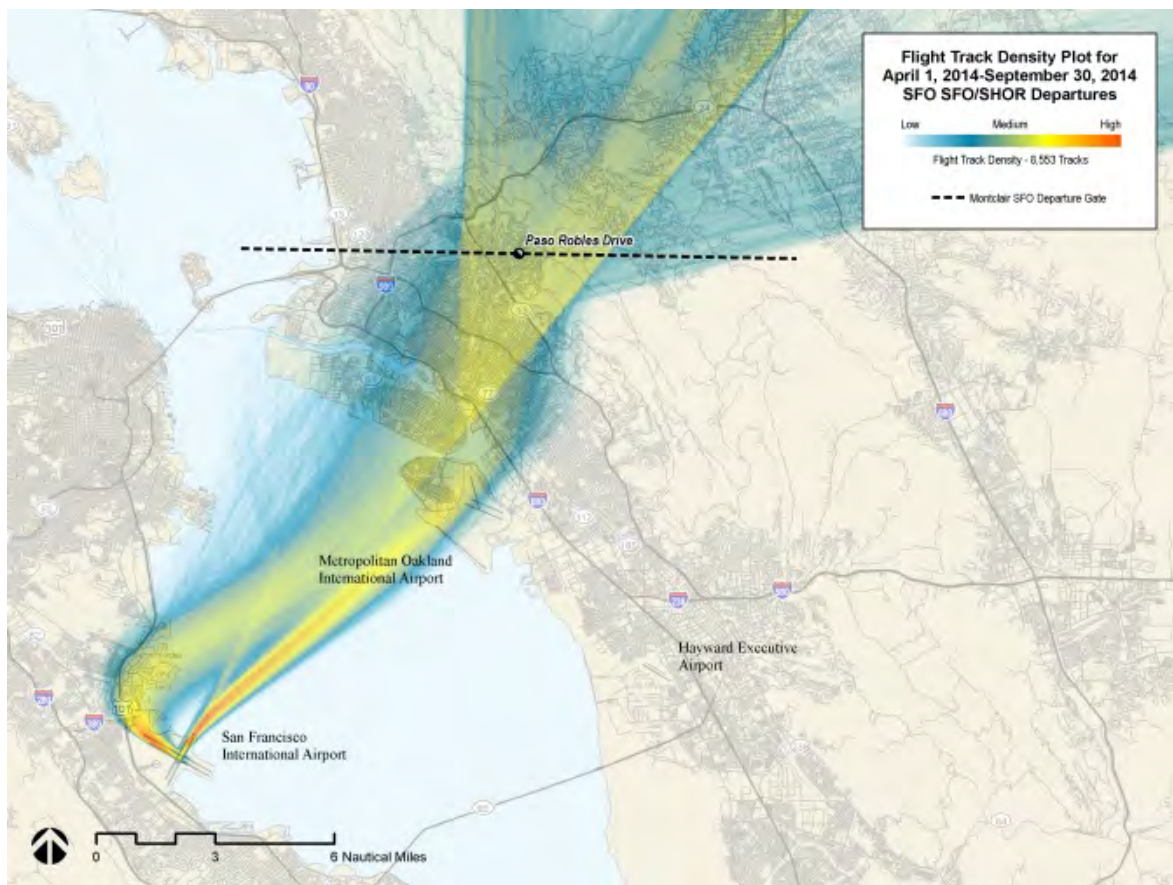
Flight Track Evaluations – WND SR2



OAK Arrivals through “Montclair” Gate: October 15 – December 30, 2015



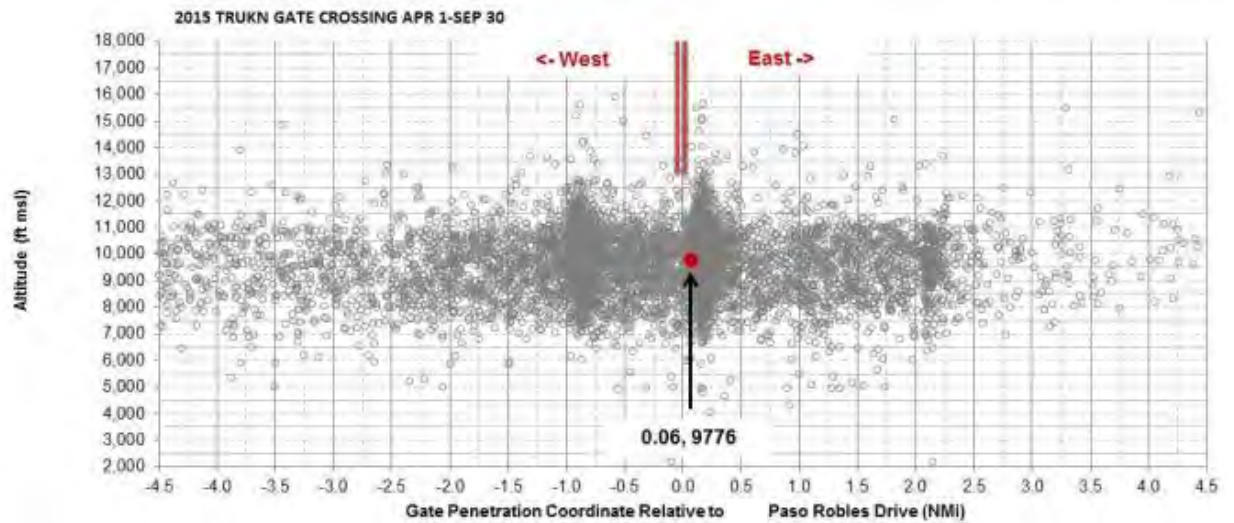
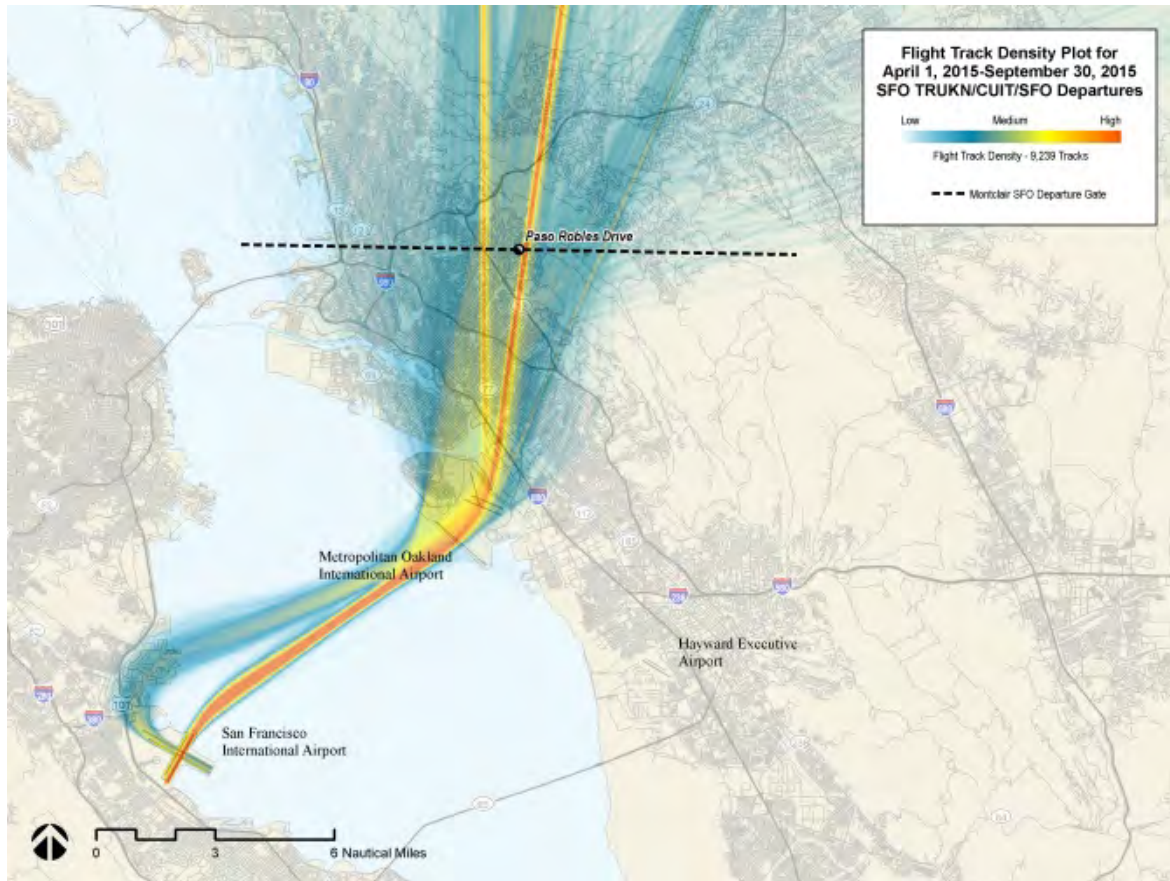
Flight Track Evaluations – SHOR



SFO Departures through “Montclair” Gate: April 1 – September 30, 2014



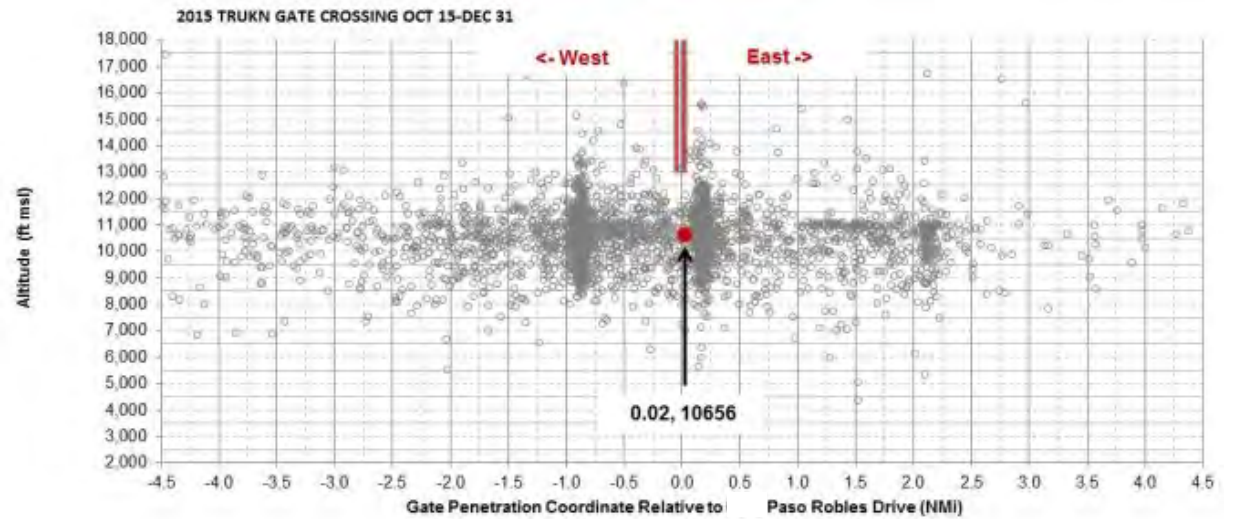
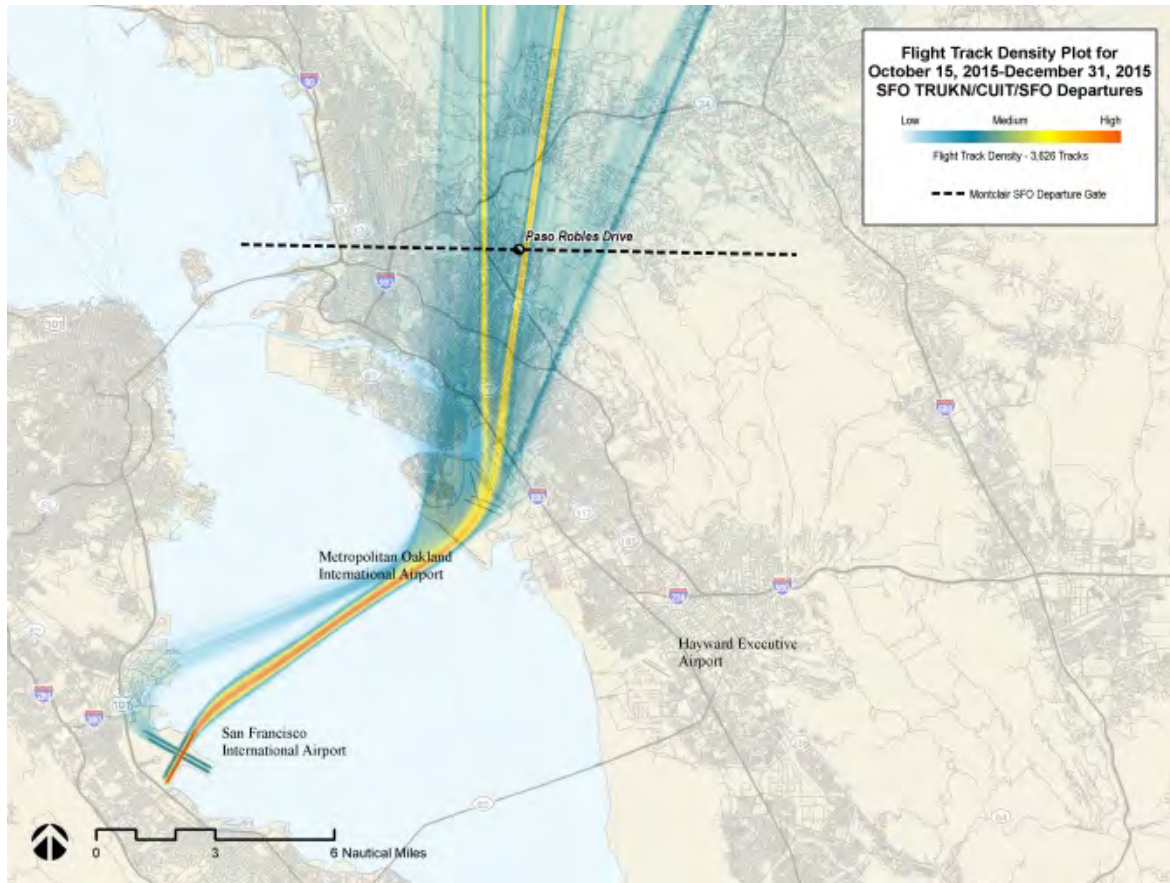
Flight Track Evaluations – TRUKN



SFO Departures through “Montclair” Gate: April 1 – September 30, 2015



Flight Track Evaluations – TRUKN



SFO Departures through “Montclair” Gate: October 15 – December 30, 2015

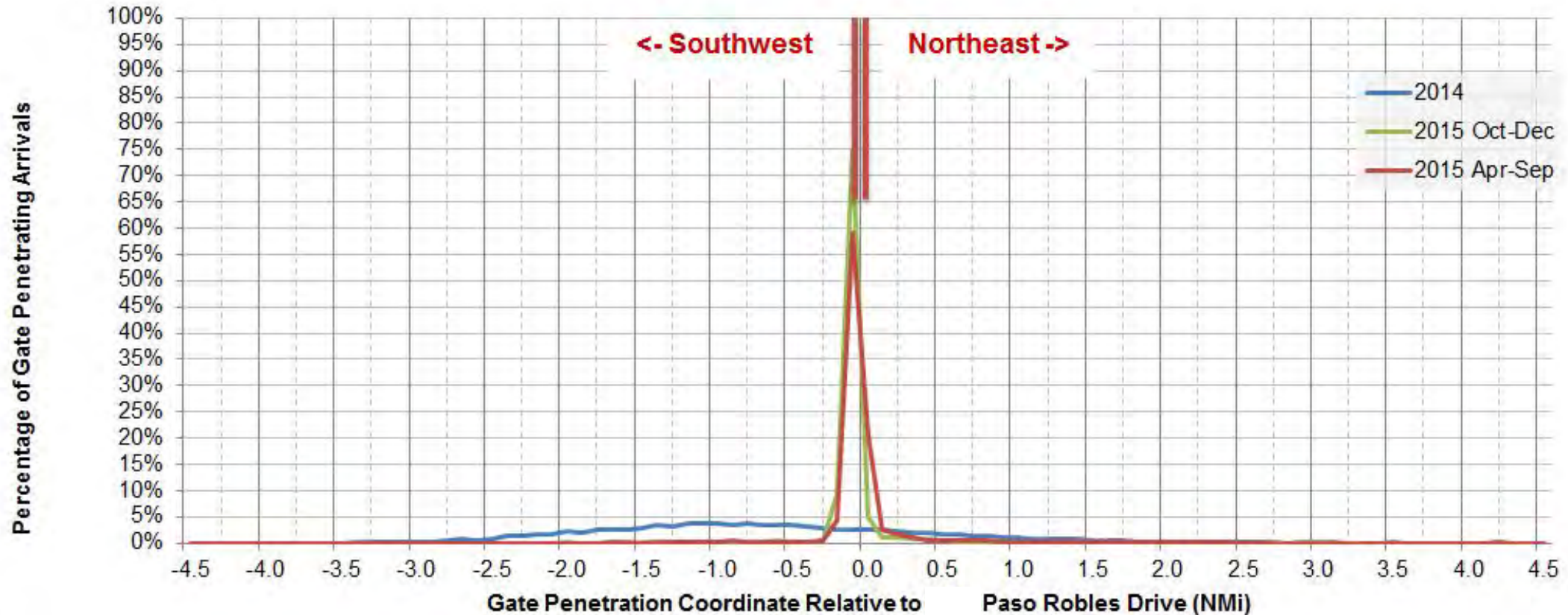


Flight Track Evaluations

Date Range	Duration (days)	FAA Procedure	Total Number of Flight Tracks	Average Flight Tracks per Day	Average Altitude at Gate Crossing (ft MSL)
4/1/2014 – 9/30/2014	183	RAIDR (OAK Arr)	6,544	36	5,000 ft
4/1/2014 – 9/30/2014	183	SHOR (SFO Dep)	8,553	47	9,632 ft
4/1/2015 – 9/30/2015	183	WNDSR (OAK Arr)	6,400	35	5,170 ft
4/1/2015– 9/30/2015	183	TRUKN (SFO Dep)	9,239	50	9,776 ft
10/15/2015 – 12/31/2015	78	WNDSR (Oak Arr)	2,655	34	5,190 ft
10/15/2015 – 12/31/2015	78	TRUKN (SFO Dep)	3,626	46	10,656 ft



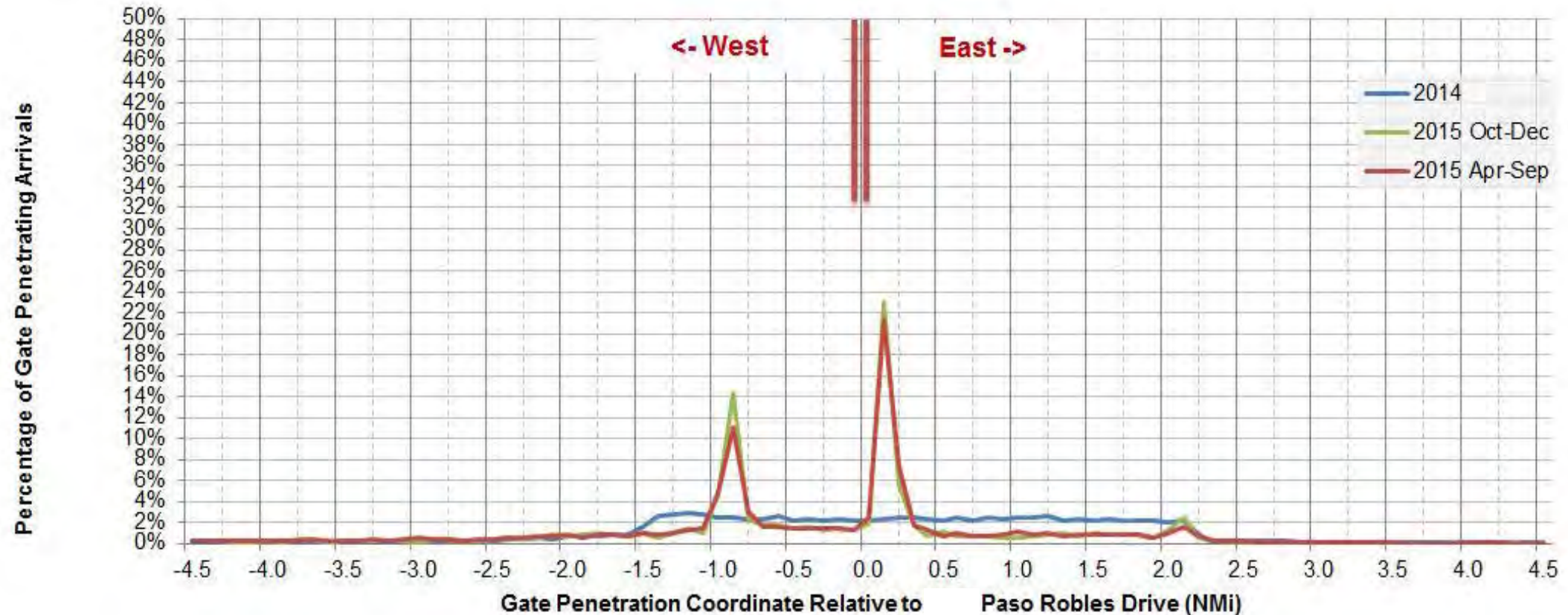
Flight Track Evaluations – RAIDR/WNDSR Gate Penetration Distribution



OAK Arrivals through “Montclair” Gate



Flight Track Evaluations – SHOR/TRUKN Gate Penetration Distribution



SFO Departures through "Montclair" Gate



Noise Evaluations

Date Range	CNEL from OAK Operations in dB	CNEL from SFO Operations in dB	CNEL from OAK and SFO Operations in dB
4/1/2014 – 9/30/2014	41.7 – 43.5	43.6 – 44.7	45.9 – 46.9
4/1/2015 – 9/30/2015	42.2 – 43.2	43.9 – 45.2	46.2 – 47.2
10/15/2015 – 12/31/2015	42.8 – 45.0	44.1 – 45.6	46.5 – 48.3

- CNEL increases from all aircraft operations:
 - 0.1 to 0.7 dB increase after Metroplex implementation
 - 0.2 to 1.2 dB increase after October 15, 2015 change to WNDSR2 procedure
 - 0.7 to 1.4 dB increase from prior to Metroplex to after change to WNDSR2 procedure
- These are noticeable increases in CNEL for Montclair residences

